



## F616 OLP Series

### Part Number: F616-OLPxxx



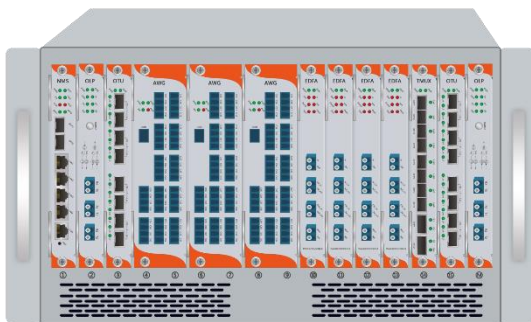
OLP Card



1U1S Chassis



2.5U8S Chassis



6U16S Chassis

### Overview

OLPxxx is an Optical Line Protection card with optical power monitoring, optical line auto-switching function for automatic protection of a particularly important service channel, enabling a higher availability and reliability for mission critical customers. The OLPxxx monitors the optical power at real time and the receiving end selects primary path to receive optical signals when the primary link is up and switches to secondary path if primary link goes down.

OLPxxx provides 1+1 or 1:1 protection scheme to meet different protection task. It is a cost-effective, high-quality management system which could be plugged in different F616 series chassis to implement device configuration, control and maintenance easily.



## Applications

- Metro DWDM distance extension
- Long-Haul transmission system
- Optical Line Protection

## Features

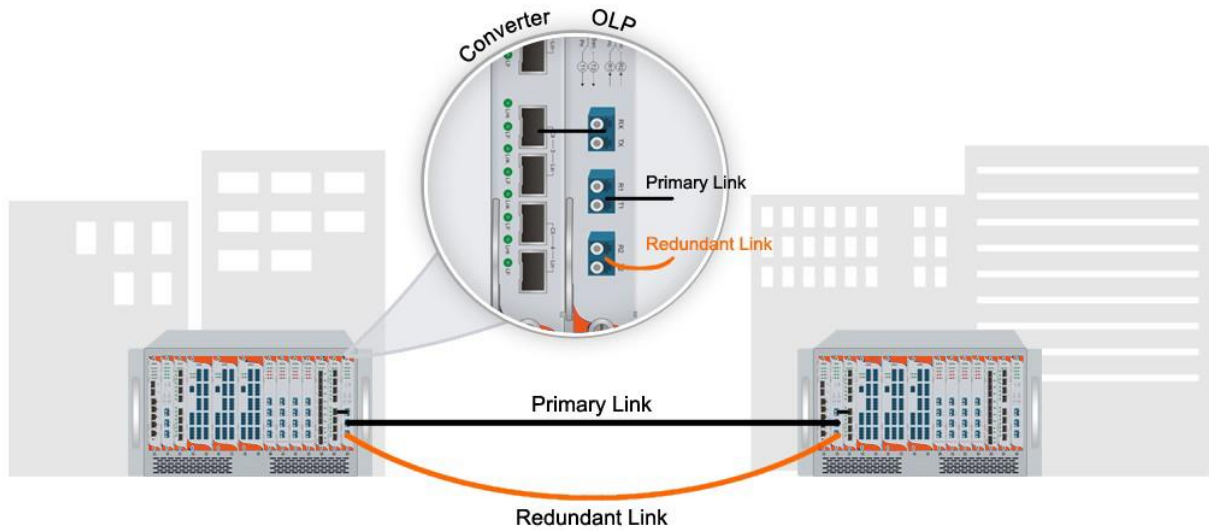
- Reduce interrupt time of communication caused by fiber failure remarkably
- Real-Time fiber power monitoring
- Transparent Data Rate transmission
- 1+1 and 1:1 protection scheme available
- Support Automatic and Manual Switching
- Switching time < 15ms (1+1 scheme)
- Support SNMP-based Network management
- Support CLI, WEB, Telnet and NMS
- All Chassis support 19" Rack

## Specification

Parameters		Technical indicators		Unit
OLP Scheme		1+1	1:1	
Insertion Loss		Tx≤4, Rx≤1.2	Tx≤1.2, Rx≤1.2	dB
Switching Time		≤15	≤35	ms
Power Consumption		≤5	≤10	W
Operating Wavelength		1260 ~ 1610		nm
Monitoring Power Range		-50 ~ +23		dBm
Monitoring Power Accuracy		±0.25		dB
Monitoring Power Resolution		±0.01		dB
Durability(Life) Times		≥10 <sup>7</sup>		
Size	OLP card	26.5(W) x 195(H) x 252(D)		mm
	1-slot chassis	482.6(W) x 350(D) x 43.6(H)		
	8-slot chassis	482.6(W) x 360(D) x 109(H)		
	16-slot chassis	482.6(W) x 360(D) x 261.6(H)		
Operating Temperature		-5 ~ +60		°C
Storage Temperature		-40 ~ +80		°C
Relative Humidity		5 ~ 95		RH%



## Application Scheme



## Ordering Information

Part No.	Function	Switching Time(ms)	Insertion Loss(dB)
OLP1+1	Dual Signal Sending Selected Signal Receiving	≤15	Tx≤4, Rx≤1.2
OLP1:1	Selected Signal Sending Selected Signal Receiving	≤35	Tx≤1.2, Rx≤1.2